

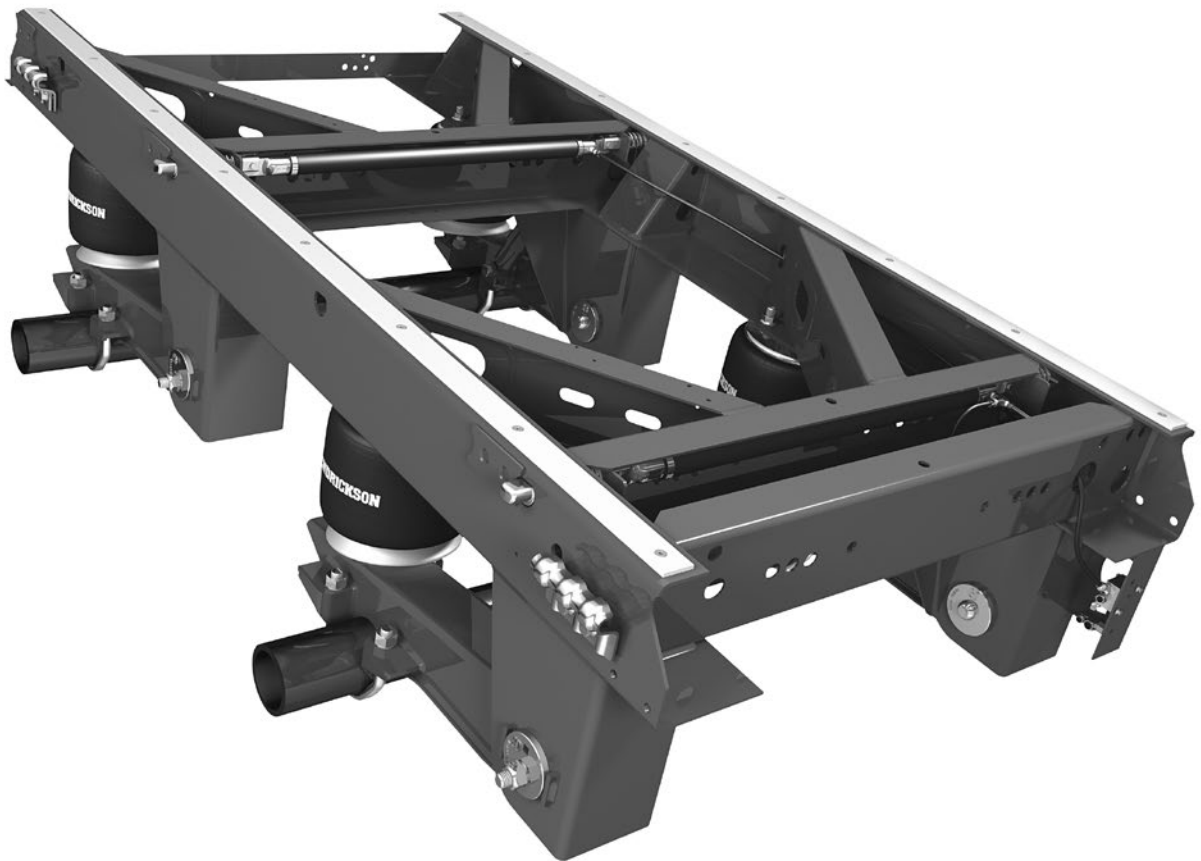
H PARTS LIST

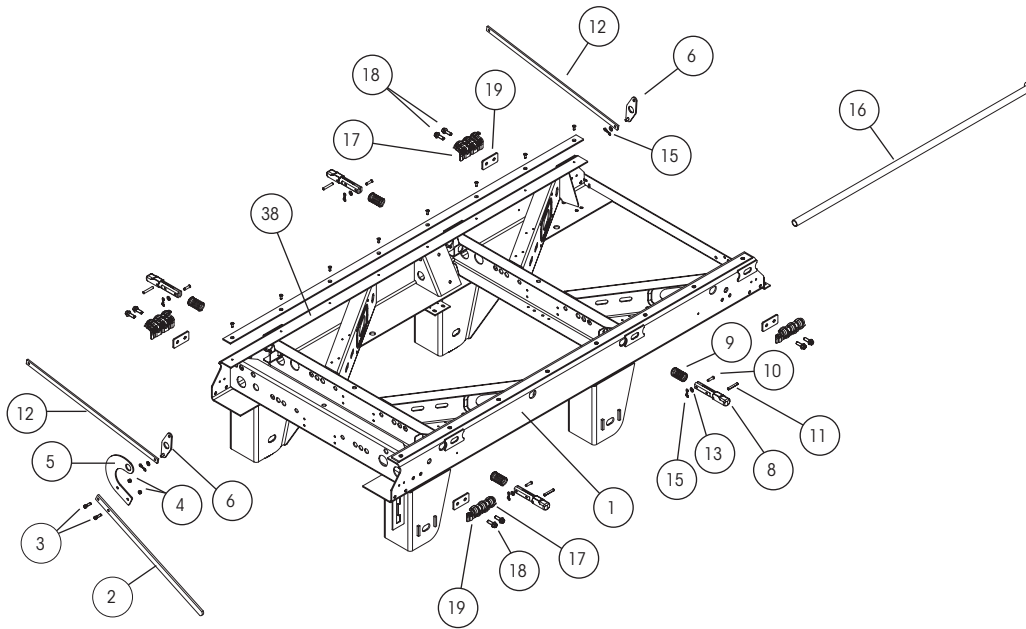
HK190 / 230 (K-2® SLIDER
WITH HT SUSPENSIONS)

LIT NO: L536

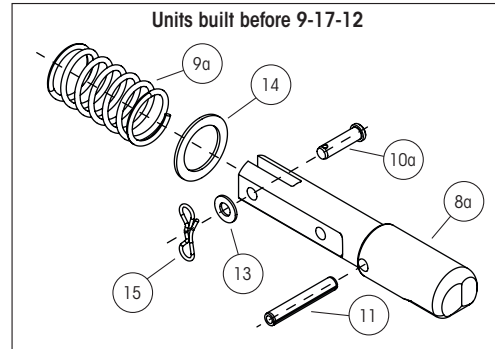
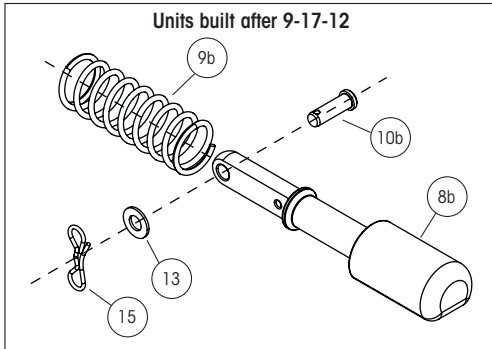
DATE: February 2014

REVISION: E

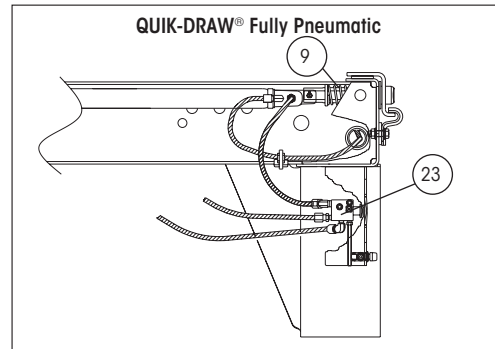
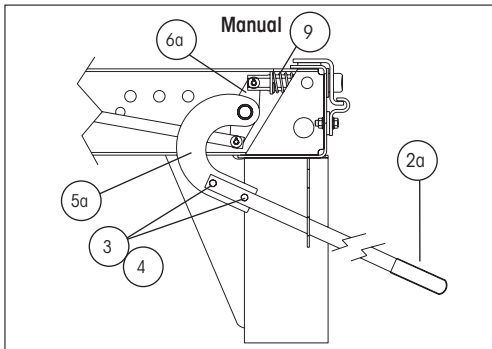




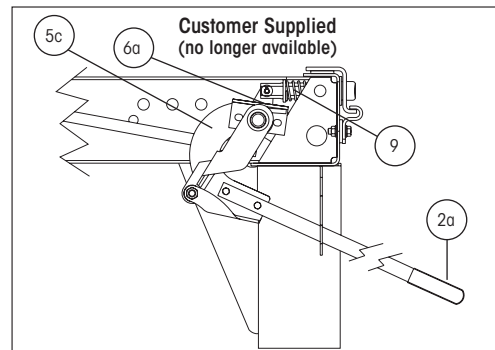
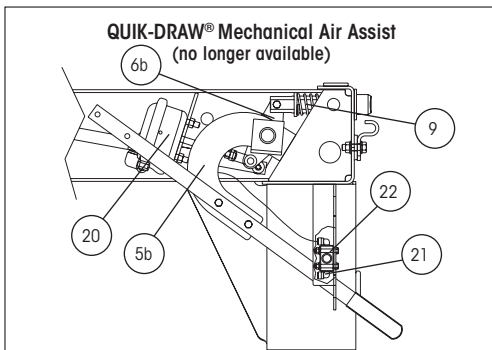
SLIDER PINS



CURRENT RELEASE MECHANISMS



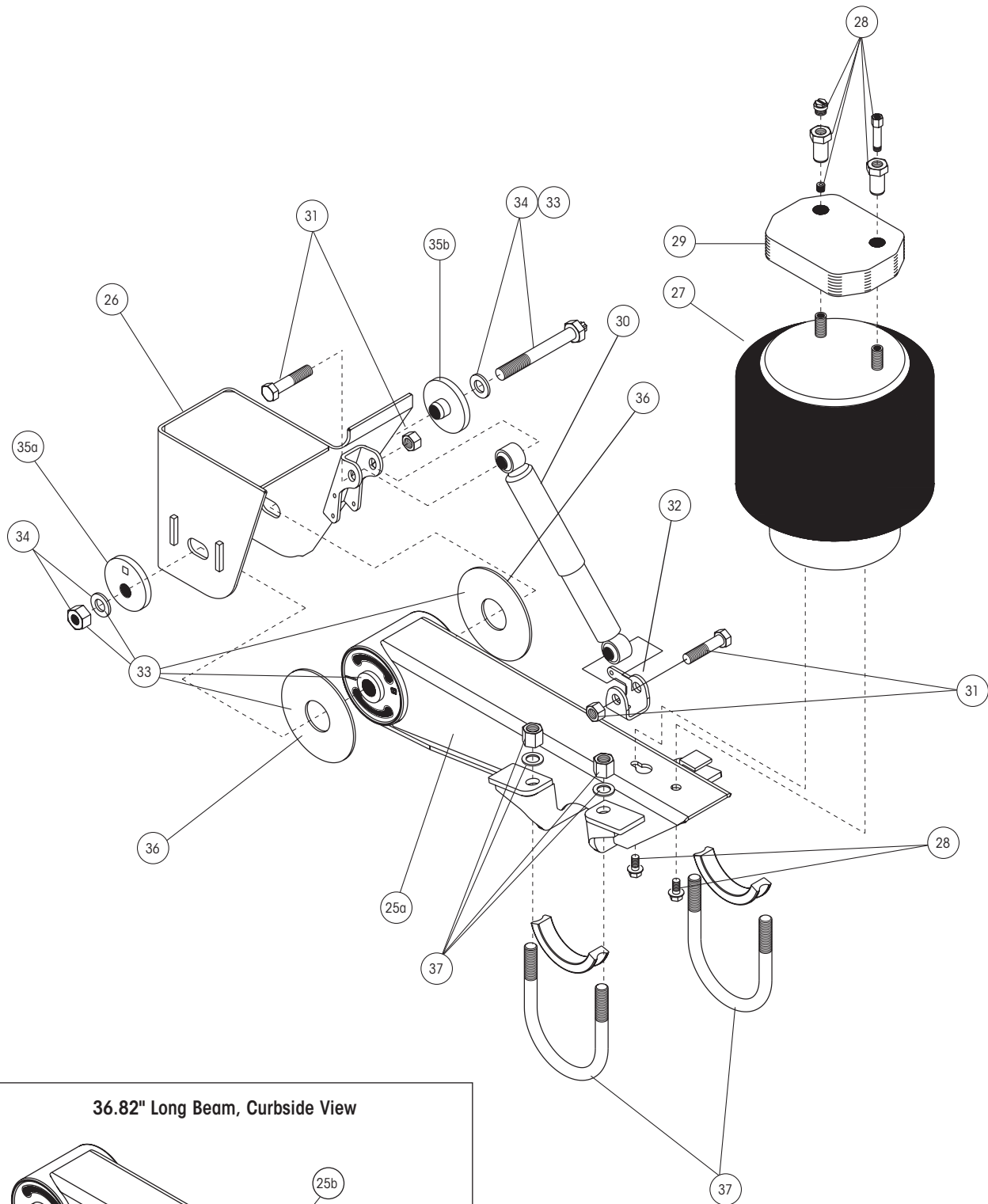
NO LONGER AVAILABLE ON PRODUCTION MODELS OR BOX REPLACEMENTS — PARTS FOR THESE MECHANISMS ARE STILL AVAILABLE



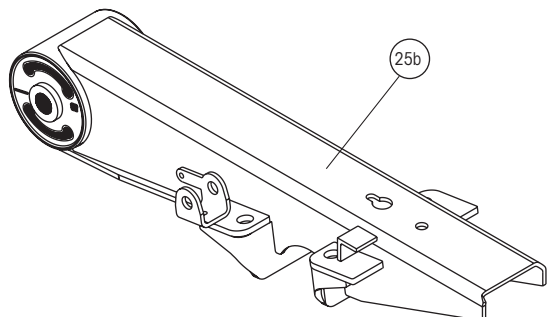


HK190T / 230 SLIDER BOX COMPONENTS

ITEM	DESCRIPTION	PART NO.	SYSTEM QTY.	NOTE
1	AFTERMARKET BOX REPLACEMENT	AMBOX.###	1	Please contact Hendrickson for assistance
2	HANDLE			
	2a Manual and customer supplied	S-25592	1	Handle and grip assembly
3	HANDLE BOLT	SA-1100-10	2	3/8"-16 x 1 1/4" hex head bolt, grade 5
4	HANDLE NUT	SA-9000-5	2	3/8"-16 lock nut, grade B
5	HANDLE MOUNT			
	5a Manual	C-21275	1	
	5b QUIK-DRAW® mechanical air assist	C-23231	1	
	5c Customer supplied	S-23534	1	Includes crank arm bolt kit
6	CRANK ARM WELDMENT			
	6a Manual and customer supplied	B-33010	2	For front and rear of slider box
	6b Mechanical air assist	B-33010	1	For rear of slider box
7	CRANK ARM BOLT KIT (not shown)	A-22041	1	Includes bolt, flat washer, lock washer and nut
8a	LOCKING PIN (Units built before 9-17-12)			
	1.375" diameter pin	S-28290	4	4" Body rail hole spacing (TTMA)
	1.375" diameter pin	S-28290	4	6" Body rail hole spacing
	1.625" diameter pin	S-28289	4	4" Body rail hole spacing
8b	LOCKING PIN (Units built after 9-17-12)			
	1.375" diameter pin	S-32389	4	4" Body rail hole spacing (TTMA)
	1.375" diameter pin	S-32389	4	6" Body rail hole spacing
	1.625" diameter pin	S-32388		4" Body rail hole spacing
9a	LOCKING PIN SPRING (Units built before 9-17-12)			
	42" box with manual or mechanical air assist	B-28930	4	3.25" Spring
	48" box with manual, QUIK-DRAW or mechanical air assist	B-28930	4	3.25" Spring
	42" box with QUIK-DRAW	B-22000	4	3.8" Spring
	42" and 48" box with customer supplied spring mechanism	B-22000	4	3.8" Spring
9b	LOCKING PIN SPRING (Units built after 9-17-12)			
	42", 48" and 54" box with QUIK-DRAW	B-32500	4	
10a	CLEVIS PIN (Units built before 9-17-12)	SA-5200-6	4	3/8" x 1 3/8"
10b	CLEVIS PIN (Units built after 9-17-12)	SA-5200-8	4	3/8" x 1 1/5"
11	SPRING PIN	SA-8100-4	4	3/8" x 2 1/2" roll pin
12	LOCKING PIN LINK			
	12a 42" box	S-32967-1	2	
	12b 48" box	S-32967-2	2	
	12c 54" box	S-32967-3	2	
13	LOCKING PIN WASHER	SA-1500-2	6	3/8" I.D. flat washer
14	PIN WASHER	S-30641	1	
15	LOCKING PIN LINK COTTER PIN	SA-1700-12	6	3/32" x 1" cotter pin
16	PIPE WELDMENT			
	16a Manual and customer supplied	S-21433	1	
	16b QUIK-DRAW (chamber actuated)	S-21433-1	1	
17	BODY RAIL CLIP			
	17a 3.4" clip height	S-24459	4	Use with 4" hole centers and 1.625" locking pin
	17b 3.8" clip height	S-24460	4	Use with 6" hole centers and 1.375" locking pin
	17c Universal 2" spacer - 4" or 6" height	S-22366	4	Hole centers measure 2"
18	BODY RAIL BOLT	SA-6900-2	8	1/2"-13 x 1 1/2" flanged bolt, grade 8
19	BODY RAIL CLIP SPACER	A-22367	4	Hole centers measure 2"
20	AIR ACTUATOR CHAMBER	A-23039	1	Type 12 modified
21	AIR VALVE	VS-23224	1	Air valve with fittings
22	VALVE CAP	A-22977	1	
23	QUIK-DRAW II VALVE	VS-25224		3-way auto reset valve with fittings
		VS-25223		3-way auto reset valve without fittings



36.82" Long Beam, Curbside View





HK190T / 230 SUSPENSION COMPONENTS

ITEM	DESCRIPTION	PART NO.	SYSTEM QTY.	NOTE
24	VALVE KNOB KIT (not shown)	VS-25849		For old style valve with plastic knob
25	BEAM ASSEMBLY¹			
25a	Front or rear, overall length is 32.65"			
	Roadside	S-20000-1		
	Curbside	S-20000-2		
25b	Rear, overall length is 36.82" (For units with SURELOK®)			
	Roadside	S-21736-1		
	Curbside	S-21736-2		
26	FRAME BRACKET			Contact Hendrickson for assistance
26a	16" ride height			
	Roadside	S-21291-1	2	
	Curbside	S-21291-2	2	
26b	16.5" ride height			
	Roadside	D-22386-1	2	
	Curbside	D-22386-2	2	
26c	17" ride height			
	Roadside	S-21497-1	2	
	Curbside	S-21497-2	2	
26d	18" ride height			
	Roadside	S-21802-1	2	
	Curbside	S-21802-2	2	
26e	19" ride height			
	Roadside	D-21803-1	2	
	Curbside	D-21803-1	2	
27	AIR SPRING			
27a	HK190T sliders	S-22045	4	
27b	HK230 sliders	S-22046	4	
28	AIR SPRING MOUNTING KITS			
28a	16" ride height / no spacer (Per air spring)	S-22907/2	4	Includes (1) 1/4"-18 NPFT plug, (2) 1/2"-13 flanged screw and (2) 3/4"-16 flanged nut
28b	16 1/2" and 17" ride height / 3/4" Thick spacer (Per air spring)	S-22908/2	4	Includes (1) 1/4"-18 NPFT plug, (2) extension nuts, .65" and (2) 1/2"-13 flanged screw
28c	18" ride height / 1 7/8" thick spacer (Per air spring)	S-22909/2	4	Includes (1) 1/4"-18 NPFT plug, (1) air fitting, 2.10", (2) extension nuts, 1.73", (2) 1/2"-13 flanged screw and (1) plug
28d	19" ride height / 3 1/8" thick spacer (Per air spring)	S-22910/2	4	Includes (1) 1/4"-18 NPFT plug, (1) air fitting, 3.10", (2) extension nuts, 2.65", (2) 1/2"-13 flanged screw and (1) plug
29	AIR SPRING SPACER			
29a	3/4" thick spacer	B-22510-4	4	16 1/2" and 17" ride height
29b	1 7/8" thick spacer	B-22510-2	4	18" ride height
29c	3 1/8" thick spacer	B-22510-3	4	19" ride height
30	SHOCK ABSORBER	S-21292	4	
31	SHOCK ABSORBER BOLT KIT	S-20031/2	4	
32	LOWER SHOCK CLEVIS	S-20069	4	
33	TRI-FUNCTIONAL® BUSHING KIT²	S-24691	4	Includes bushing, pivot bolt kit, wear pads and lube

¹Measure beam assembly before ordering. Some models have 32.65" beam assemblies for both the front and rear; others have 32.65" beam assemblies on the front and 36.82" beam assemblies on the rear. Units with 36.82" beam assemblies on the rear are designed to accommodate SURELOK®. Units with the 32.65" beam assemblies on the rear require the addition of a weld-on beam extension to accommodate SURELOK.



²Bushing tool S-21307 is required to properly re-bush the suspension.

ITEM	DESCRIPTION	PART NO.	QTY.	NOTE
34	QUIK-ALIGN® Pivot Bolt Kit (Per Hanger)	S-24679	4	Includes (1) 10" shear type bolt, (1) torque heavy hex nut and (2) hardened steel washers
35	ALIGNMENT COLLARS			
	35a Eccentric (Outer)	S-20925	4	Pivot bolt hole is offset from center of collar
	35b Concentric (Inner)	S-20924	4	Pivot bolt hole is in center of collar
36	BUSHING TUBE SPACERS	S-21099	8	
37	U-BOLT KIT	S-21140		Order S-21140/4 for a single U-Bolt, nut and washer. Kit includes: (4) U-Bolt, cornered radius, (8) nuts, and (8) washers
38	SLIDER WEAR PAD KIT	S-14342-3	2	Includes (1) slider wear pad and (8) screws

Call your trailer dealer or Hendrickson at **330.489.0045** or **866.RIDEAIR (743.3247)** for additional information.



www.hendrickson-intl.com

TRAILER COMMERCIAL VEHICLE SYSTEMS

2070 Industrial Place SE
Canton, OH 44707-2641 USA
866.RIDEAIR (743.3247)
330.489.0045 • Fax 800.696.4416

Hendrickson Canada

250 Chrysler Drive, Unit #3
Brampton, ON Canada L6S 6B6
800.668.5360
905.789.1030 • Fax 905.789.1033

Hendrickson Mexicana

Circuito El Marqués Sur #29
Parque Industrial El Marqués
Pob. El Colorado, Municipio El Marqués,
Querétaro, México C.P. 76246
+52 (442) 296.3600 • Fax +52 (442) 296.3601